

scanEDGE™ Kinase Assay Panel

96 assays - an economical approach to surveying the human kinome

An economical approach to surveying the human kinome, scanEDGE™ includes 96 kinases distributed throughout the AGC, CAMK, CMGC, CK1, STE, TK, TKL, lipid, and atypical kinase families, plus important mutant forms. scanEDGE is an economical alternative to scanMAX and useful to assess compound selectivity at all stages of drug discovery and development, from lead discovery & hit identification to lead optimization. Assays may be substituted to create a custom solution for your specific program requirements, and with five business day turnaround available, scanEDGE is an ideal solution for SAR and lead optimization activity.

96 Kinase Assays

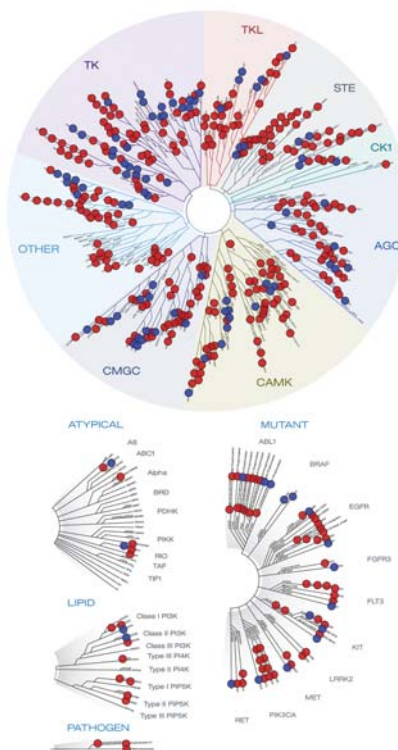


Figure 1. Red circles represent all kinases currently available in the KINOMEScan™ panel. Blue circles represent assays included in the scanEDGE™ panel.

Panel Highlights & Benefits

- Panel of 96 kinases distributed across the kinome
- High-quality reproducible data
- Rapid turnaround time
- Broad dynamic range: can detect compounds with Kds <100 pM to >10 mM
- Flexible - standard and custom panels
- Activation-state specific assays
- Detect of multiple inhibitor types (e.g. type I, II & non-ATP competitive)

KINOMEScan Gene Symbol	Entrez Gene Symbol	Accession Number	KINOMEScan Gene Symbol	Entrez Gene Symbol	Accession Number
ABL1(E255K)*	ABL1	NP_005148.2	CHEK1	CHEK1	NP_001265.2
ABL1(T315I)*	ABL1	NP_005148.2	CSF1R	CSF1R	NP_005202.2
ABL1*	ABL1	NP_005148.2	CSNK1D	CSNK1D	NP_620693.1
ACVR1B	ACVR1B	NP_004293.1	CSNK1G2	CSNK1G2	NP_001310.2
ADCK3	CABC1	NP_064632.2	DCAMKL1	DCLK1	NP_004725.1
AKT1	AKT1	NP_005154.2	DYRK1B	DYRK1B	NP_004705.1
AKT2	AKT2	NP_001617.1	EGFR	EGFR	NP_005219.2
ALK	ALK	NP_004295.2	EGFR(L858R)	EGFR	NP_005219.2
AURKA	AURKA	NP_003591.2	EPHA2	EPHA2	NP_004422.2
AURKB	AURKB	EAW90073.1	ERBB2	ERBB2	NP_001005862.1
AXL	AXL	NP_001690.2	ERBB4	ERBB4	NP_001036064.1
BMPR2	BMPR2	NP_001195.2	ERK1	MAPK3	NP_002737.2
BRAF	BRAF	NP_004324.2	FAK	PTK2	NP_722560.1
BRAF(V600E)	BRAF	NP_004324.2	FGFR2	FGFR2	NP_075259.4
BTK	BTK	NP_000052.1	FGFR3	FGFR3	NP_000133.1
CDK2	CDK2	NP_001789.2	FLT3	FLT3	NP_004110.2
CDK3	CDK3	NP_001249.1	GSK3B	GSK3B	NP_002084.2
CDK7	CDK7	NP_001790.1	IGF1R	IGF1R	NP_000866.1
CDK9	CDK9	NP_001252.1	IKK-alpha	CHUK	NP_001269.3
CDK11	CDK19	NP_055891.1	IKK-beta	IKBKB	NP_001547.1

*Phosphorylated

KINOMEScan Gene Symbol	Entrez Gene Symbol	Accession Number	KINOMEScan Gene Symbol	Entrez Gene Symbol	Accession Number
INSR	INSR	NP_000199.2	PIK3C2B	PIK3C2B	NP_002637.2
JAK2**	JAK2	NP_004963.1	PIK3CA	PIK3CA	NP_006209.2
JAK3**	JAK3	NP_000206.2	PIK3CG	PIK3CG	NP_002640.2
JNK1	MAPK8	NP_002741.1	PIM1	PIM1	NP_002639.1
JNK2	MAPK9	NP_620707.1	PIM2	PIM2	NP_006866.2
JNK3	MAPK10	NP_002744.1	PIM3	PIM3	NP_001001852.1
KIT	KIT	NP_000213.1	PKAC-alpha	PRKACA	NP_002721.1
KIT(D816V)	KIT	NP_000213.1	PLK1	PLK1	NP_005021.2
KIT(V559D,T670I)	KIT	NP_000213.1	PLK3	PLK3	NP_004064.2
LKB1	STK11	NP_000446.1	PLK4	PLK4	NP_055079.2
MAP3K4	MAP3K4	NP_005913.2	PRKCE	PRKCE	NP_005391.1
MAPKAPK2	MAPKAPK2	NP_116584.2	RAF1	RAF1	NP_002871.1
MARK3	MARK3	NP_002367.4	RET	RET	NP_065681.1
MEK1	MAP2K1	NP_002746.1	RIOK2	RIOK2	NP_060813.2
MEK2	MAP2K2	NP_109587.1	ROCK2	ROCK2	NP_004841.2
MET	MET	NP_000236.2	RSK2***	RPS6KA3	NP_004577.1
MKMK1	MKMK1	NP_001129025.1	SNARK	NUAK2	NP_112214.1
MKMK2	MKMK2	NP_060042.2	SRC	SRC	NP_005408.1
MLK1	MAP3K9	NP_149132.2	SRPK3	SRPK3	NP_055185.2
P38-alpha	MAPK14	NP_620581.1	TGFBR1	TGFBR1	NP_004603.1
P38-beta	MAPK11	NP_002742.3	TIE2	TEK	NP_000450.2
PAK1	PAK1	NP_002567.3	TRKA	NTRK1	NP_001012331.1
PAK2	PAK2	AAA65442.1	TSSK1B	TSSK1B	NP_114417.1
PAK4	PAK4	NP_001014834.1	TYK2**	TYK2	NP_003322.2
PCTK1	CDK16	NP_006192.1	ULK2	ULK2	NP_055498.3
PDGFRA	PDGFRA	NP_006197.1	VEGFR2	KDR	NP_002244.1
PDFGRB	PDFGRB	NP_002600.1	YANK3	STK32C	NP_775846.2
PDPK1	PDPK1	NP_002604.1	ZAP70	ZAP70	NP_997402.1

**JH1domain-catalytic

***Kin.Dom.1-N-terminal

Offices

DiscoverX Corporation
 (World Wide Headquarters)
 42501 Albrae Street
 Fremont, CA 94538, US
 tel | 510.979.1415
 fax | 510.979.1650
 toll-free | 866.448.4864
 email | info@discoverx.com
www.discoverx.com

KINOMEScan™
A division of DiscoverX
 11180 Roselle Street, Suite D
 San Diego, CA 92121
 toll-free | 800.644.5687
 fax | 858.630.4600
 email | sales@kinomescan.com
www.kinomescan.com

DiscoverX Corporation Ltd.
 (Europe Headquarters)
 Faraday Wharf, Holt Street
 Aston Science Park,
 Birmingham, B7 4BB, UK
 tel | +44.121.260.6142
 fax | +44.121.260.6143
 email | info@discoverx.com
www.discoverx.com