

# scanLIPID™ Kinase Assay Panel

20 assays - the largest lipid kinase assay panel available

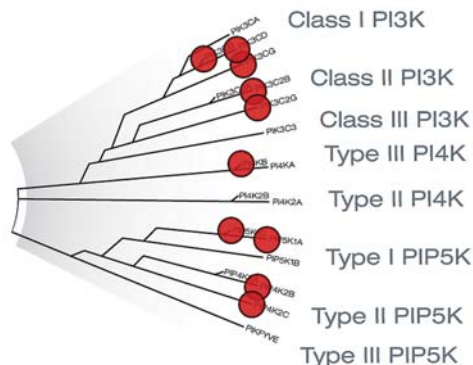
The largest commercial collection of human lipid kinase assays available, scanLIPID™ contains a panel of PI3K, PI4K, PIP plus clinically relevant mutants and represents an ideal solution, alone or paired with additional relevant kinases, to explore this target class.

scanLIPID is a focused panel for all stages of drug discovery and development, from high throughput HTS campaigns associated with lead discovery & hit identification to lower throughput applications including benchmarking small numbers of compounds, lead optimization and preclinical applications.

### Panel Highlights & Benefits

- Panel of 20 high value lipid kinase assays
- High-quality reproducible data
- Rapid turnaround time
- Broad dynamic range: can detect compounds with Kds <100 pM to >10 mM
- Flexible - standard and custom panels
- Economically priced

### 20 Lipid Kinase Assays



**Figure 1.** Red circles (above) represent all kinases currently available in the KINOMEscan™ scanLIPID™ assay panel (Mutant forms of lipid kinase assays not shown).

KINOMEscan Gene Symbol	Entrez Gene Symbol	Accession Number	KINOMEscan Gene Symbol	Entrez Gene Symbol	Accession Number
PIK3C2B	PIK3C2B	NP_002637.2	PIK3CA(M1043I)	PIK3CA	NP_006209.2
PIK3C2G	PIK3C2G	NP_004561.2	PIK3CA(Q546K)	PIK3CA	NP_006209.2
PIK3CA	PIK3CA	NP_006209.2	PIK3CB	PIK3CB	NP_006210.1
PIK3CA(C420R)	PIK3CA	NP_006209.2	PIK3CD	PIK3CD	NP_005017.2
PIK3CA(E542K)	PIK3CA	NP_006209.2	PIK3CG	PIK3CG	NP_002640.2
PIK3CA(E545A)	PIK3CA	NP_006209.2	PIK4CB	PIK4CB	NP_002642.1
PIK3CA(E545K)	PIK3CA	NP_006209.2	PIP5K1A	PIP5K1A	NP_001129110.1
PIK3CA(H1047L)	PIK3CA	NP_006209.2	PIP5K1C	PIP4K2C	NP_036530.1
PIK3CA(H1047Y)	PIK3CA	NP_006209.2	PIP5K2B	PIP4K2B	NP_003550.1
PIK3CA(I800L)	PIK3CA	NP_006209.2	PIP5K2C	PIP5K1C	NP_079055.2