

See What You Are Missing

158 Kinases You Can't Get From The Next Leading Provider

- 158 kinases not available from the next leading provider
- Affords a comprehensive view of potential off-target activity that smaller panels may overlook
- Avoid costly decisions due to incomplete data or even lost opportunities

It is no surprise that more researchers are turning to KINOMEScan™ to help drive their discovery and SAR. To request a quote and see what you have been missing, contact your local sales representative or email us at sales@kinomescan.com.

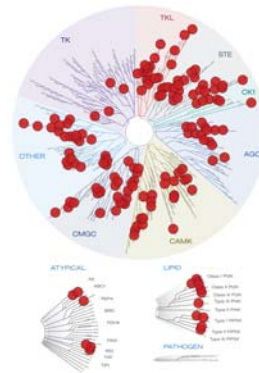


Figure 1. Red circles represent unique KINOMEScan™ kinases not currently available from the next leading provider (Mutant kinases not used or mapped in assay panel comparisons).

Case Study: Assessing Compound Selectivity & Potency Across Delta Set Ce Assays

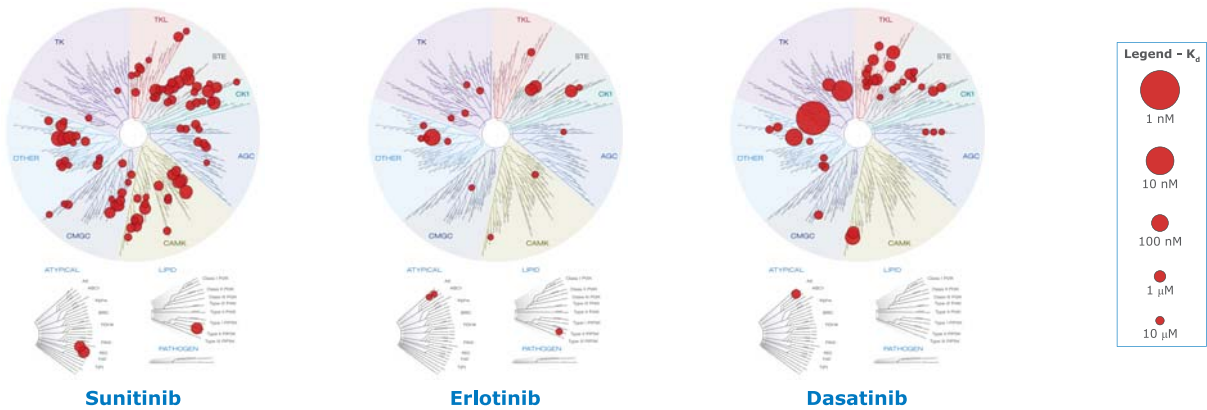


Figure 2. Kd values $\leq 3 \mu\text{M}$ for three FDA-approved kinase inhibitors across the 158 kinases not available from the next leading provider.

scanUNIQUE™, Delta Set Ce: 158 Kinases									
AAK1	CAMK1G	CSNK1A1L	ERK3	LATS2	MLCK	PAK7	PIP5K2C	SNARK	TLK2
ACVR1	CAMK2B	CSNK1D	ERK4	LIMK2	MLK3	PCTK2	PKAC-beta	SNRK	TNIK
ACVR2A	CAMK2D	CSNK1G1	ERK8	LKB1	MRCKB	PCTK3	PRP4	SRPK1	TNNI3K
ACVR2B	CAMKK1	CSNK1G2	ERN1	LOK	MYLK2	PFTAIRE2	QSK	SRPK2	TRPM6
ACVRL1	CAMKK2	CSNK1G3	GAK	LZK	MYLK4	PFTK1	RIOK1	SRPK3	ULK3
ADCK3	CASK	CSNK2A2	GCN2	MAK	MYO3A	PIK3C2B	RIOK2	STK16	VRK2
ADCK4	CDC2L1	DAPK3	GRK1	MAP3K1	MYO3B	PIK3C2G	RIOK3	STK35	WEE2
AMPK-alpha1	CDC2L2	DCAMKL3	GRK4	MAP3K15	NDR2	PIK3CA	RIPK1	STK36	WNK1
AMPK-alpha2	CDC2L5	DDR1	GRK7	MAP3K2	NEK11	PIK3CB	RIPK4	STK39	YANK1
ANKK1	CDK11	DMPK	HASPIN	MAP4K3	NEK3	PIK3CD	RIPK5	TAOK1	YANK2
ASK2	CDKL1	DMPK2	HIPK1	MAP4K5	NEK5	PIK3CG	RSK4*	TAOK3	YANK3
BIKE	CDKL2	DRAK2	HPK1	MAST1	NEK9	PIK4CB	RSK4**	TESK1	YSK1
BMPR1B	CDKL3	DYRK1B	HUNK	MEK2	NLK	PIM3	SBK1	TGFBR1	YSK4
BMPR2	CDKL5	EIF2AK1	ICK	MEK3	OSR1	PIP5K1A	SgK110	TGFBR2	ZAK
BRSK2	CLK3	EPHB6	IRAK3	MEK4	PAK3	PIP5K1C	SIK2	TIE1	
BUB1	CLK4	ERBB3	LATS1	MKK7	PAK6	PIP5K2B	SLK	TLK1	

*Kin.Dom.1-N-terminal **Kin.Dom.2-C-terminal