

See What You Are Missing

174 Kinases You Can't Get From The Next Leading Provider

- 174 kinases not available from the next leading provider
- Affords a comprehensive view of potential off-target activity that smaller panels may overlook
- Avoid costly decisions due to incomplete data or even lost opportunities

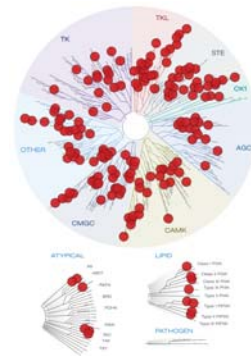


Figure 1. Red circles represent unique KINOMEScan™ kinases not currently available from the next leading provider (Mutant kinases not used or mapped in assay panel comparisons).

It is no surprise that more researchers are turning to KINOMEScan™ to help drive their discovery and SAR. To request a quote and see what you have been missing, contact your local sales representative or email us at sales@kinomescan.com.

Case Study: Assessing Compound Selectivity & Potency Across Delta Set M Assays

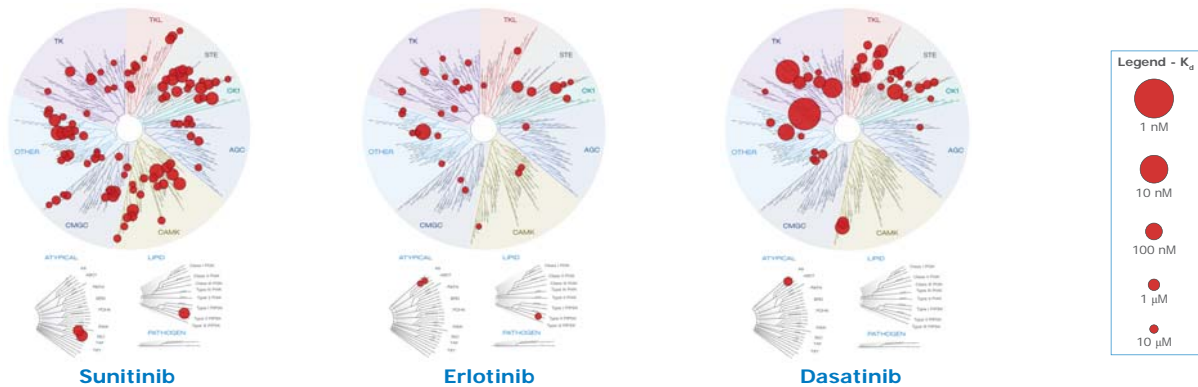


Figure 2. Kd values $\leq 3 \mu\text{M}$ for three FDA-approved kinase inhibitors across the 174 kinases not available from the next leading provider.

scanUNIQUE™, Delta Set M: 174 Kinases									
AAK1	BUB1	CLK4	ERK3	LATS2	MEK3	NIM1	PKMYT1	SNARK	TYK2*
ACVR1	CAMK1G	CSNK1A1	ERK4	LIMK2	MEK4	OSR1	PKN1	SNRK	TYK2**
ACVR2A	CAMK2A	CSNK1A1L	ERK5	LRRK2	MEK5	PAK1	PLK4	SRMS	ULK1
ACVR2B	CAMKK1	CSNK1E	ERK8	LTK	MKNK1	PCTK1	PRKD3	STK16	WEE1
ACVRL1	CAMKK2	CTK	ERN1	LZK	MLCK	PCTK2	PRKG2	STK35	WEE2
ADCK3	CASK	DCAMKL1	GAK	MAK	MLK2	PCTK3	PRKR	STK36	WNK1
ADCK4	CDC2L1	DCAMKL3	GCN2	MAP3K1	MLK3	PFTAIRE2	PRP4	STK39	YANK1
AMPK-alpha1	CDC2L2	DDR1	GRK1	MAP3K15	MST4	PFTK1	QSK	TESK1	YANK2
AMPK-alpha2	CDC2L5	DLK	GRK4	MAP3K2	MYLK2	PHKG1	RIOK1	TGFBR1	YANK3
ANKK1	CDK11	DMPK2	HIPK4	MAP3K3	MYLK4	PIK3C2B	RIOK2	TGFBR2	YSK1
ASK2	CDK4-cyclinD1	DRAK2	HPK1	MAP3K4	MYO3A	PIK3C2G	RIOK3	TIE1	YSK4
AURKC	CDK8	DYRK1A	HUNK	MAP4K3	MYO3B	PIK3CA	RIPK1	TLK1	ZAK
BIKE	CDKL1	DYRK1B	ICK	MAP4K4	NDR1	PIK4CB	RIPK4	TNIK	
BLK	CDKL2	EIF2AK1	IKK-epsilon	MAP4K5	NDR2	PIP5K1A	RIPK5	TNK1	
BMPR1A	CDKL3	EPHA6	IRAK3	MARK3	NEK1	PIP5K1C	SBK1	TNNI3K	
BMPR1B	CDKL5	EPHB6	JAK1*	MARK4	NEK4	PIP5K2B	SgK110	TRKC	
BMPR2	CIT	ERBB2	JAK1**	MAST1	NEK5	PIP5K2C	SIK2	TRPM6	
BRAF	CLK1	ERBB3	LATS1	MEK2	NEK9	PKAC-beta	SLK	TTK	

*JH1domain-catalytic **JH2domain - pseudokinase